

11th Asia-Pacific Regional Conference of Alzheimer's Disease International

June 13-15, 2008, Taipei, Taiwan



*Dementia Care:
Fight and Light*

Venue

Howard Plaza Hotel Taipei, Taiwan

Host Organizations

Taiwan Alzheimer's Disease Association
Alzheimer's Disease International

<http://www.alz2008.org.tw>

Email: alz2008@knaintl.com.tw

***Second Announcement
Call for Abstracts and Registration***

Tentative Program at a Glance

For update information, please visit conference website at <http://www.alz2008.org.tw>

Time	June 13 (Fri)	June 14 (Sat)	June 15 (Sun)
09:00-10:30		<p>[OP]</p> <ul style="list-style-type: none"> • Ming-Been Lee, President of TADA • Orien Reid, Chairwoman of ADI • Minister of Health • My Journey of Dementia Care 	<p>[KL02] SI</p> <p>Care Related Subject</p> <p>Evidence-Based Design for People with Dementia</p> <p>Margaret P. Calkins</p> <p>(TBA)</p>
10:30-10:50		<p>Coffee Break</p> <p>[KL01] SI</p> <p>Medical (Prevention/Early Diagnosis)</p> <p>Prevention of Alzheimer's Disease</p> <p>Henry Brodaty</p> <p>Mild Cognitive Impairment</p> <p>Linda Lam</p>	<p>Coffee Break</p> <p>[KL03] SI</p> <p>People with Dementia & Carers</p> <p>Developing A Home and Community-Based Strategy for Dementia Care</p> <p>Kenneth Hepburn</p> <p>Researcher, Clinician and Caregiver</p> <p>Hsiu-Chih Liu</p>
10:50-12:30			
12:30-14:00		<p>Luncheon Symposium</p>	<p>Luncheon Symposium</p>
14:00-15:30	Registration	<p>[SP/FP01] Medical</p> <p>Ming-Jang Chiu</p> <p>Ching-Kuan Liu</p> <p>[SP/FP02] Dementia Care by Foreign Helper</p> <p>[SP/FP03] Living with Memory Loss Program</p> <p>[SP04] Voice of People with Dementia</p>	<p>[SP/FP09] Medical</p> <p>Advances in Treatment of AD</p> <p>Henry Brodaty</p> <p>BPSD</p> <p>Linda Lam</p> <p>[SP/FP10] Psychological Approach</p> <p>[SP/FP11] Non-Pharmacology Treatment</p> <p>[FP12] World Alzheimer's Day Campaign (Training for ADI Members)</p>
15:30-16:00		<p>Coffee Break</p>	<p>Coffee Break</p>
16:00-17:30		<p>[SP05] Chinese Cross Strait Session</p> <p>Yin-Hua Wang</p> <p>[SP/FP06] Quality of Care</p> <p>Strategies for Training Nurse Caregiving Personnel</p> <p>Kenneth Hepburn</p> <p>[SP/FP07] Dementia in Acute Care Setting</p> <p>[SP08] Family Support Program</p>	<p>[SP/FP13] Ethical & Legal Issues</p> <p>Care Management of Dementia Special Care Unit</p> <p>[SP/FP14] Non-Pharmacology Treatment (Cognitive Training)</p> <p>[SP16] ADI Country Presentation</p>
19:00	Welcome Reception	Gala Dinner	
		OP=Opening Ceremony	SP=Symposium
		KL=Keynote Lecture	FP=Free Paper

Content

02	Invitation
04	Organization
05	General Information
06	Call for Abstracts
07	Registration Information
08	Social Programs
08	Optional Tour
10	Hotel Accommodations
11	Registration Form
12	Method of Payment
13	Taipei City Map





Invitation

Dear Colleagues,

Taiwan Alzheimer's Disease Association (TADA) and Alzheimer's Disease International (ADI) will jointly host the 11th Asia-Pacific Regional Conference of Alzheimer's Disease International at Howard Plaza Hotel Taipei from June 13th to 15th, 2008. The main theme of this conference is "Dementia Care: Fight and Light".

Throughout the world, more and more policy makers are working hard to make dementia a national health priority. In the public domain, there are quality of care, insurance, ethical and legal issues to be discussed and managed. In the clinical and research fronts, progress in treatment regimes, support programs, care unit design, and other topics would be high-lighted in this conference.

In addition to TADA and ADI, there are 14 conjunct associations such as Taiwan Medical Association, Taiwan Dementia Society, Taiwan Neurological Society, Taiwanese Society of Psychiatry, and Taiwanese Society of Geriatric Psychiatry...that fully support this key event by offering both man-power and brain-power.

As Chairman of the Organizing Committee, I cordially invite you to attend the conference. I am confident the plenary speeches, symposia, workshops and poster presentations will facilitate many in-depth discussions and opportunities for collaborations among peers. And through networking and sharing, you will find your trip to Taipei a very worthy investment.

All of us on the Organizing and Scientific committees look much forward to meeting you in Taipei in June, 2008.

Sincerely yours,



Ming-Been Lee, M.D.

Chairperson
Organizing Committee
11th Asia-Pacific Regional Conference of
Alzheimer's Disease International

President
Taiwan Alzheimer's Disease Association
Taiwan Medical Association

11th Asia-Pacific Regional Conference of Alzheimer's Disease International

Dementia Care: Fight and Light

Dear conference delegates,

It is my sincere pleasure to invite you to the 11th Asia-Pacific Conference of Alzheimer's Disease International. The conference has an engaging and powerful theme, "Dementia Care: Fight and Light." It focuses on some of the most challenging aspects of dementia including, information and education tackling the stigma of dementia; quality care and support for people with dementia and their families; and important ethical and legal issues related to dementia.



As the federation of 77 member associations worldwide, ADI is raising awareness about the global impact of dementia and calls for recognition of dementia as a global health priority. We live in a world where there is more than one new case of dementia every seven seconds. The recently published report, "Dementia in the Asia Pacific Region: The Epidemic Is Here" warns that dementia will potentially devastate health systems in Asia-Pacific countries and the quality of life of their people.

This conference will give you the opportunity to collaborate about best practices in dementia care and network with leading clinical and professional care professionals in the Asia-Pacific region. We have planned informative plenary, symposia, workshop and poster presentations.

We look forward to meeting you in Taipei in June 2008.

With sincere wishes,

Orien Reid

Chairwoman

Alzheimer's Disease International





Organization

Host Organization

Taiwan Alzheimer's Disease Association
Alzheimer's Disease International

Co-host Organization

Division of Gerontology Research, National Health
Research Institutes

Taiwan Long-Term Care
Professional Association

Psychiatric Mental Health Nurses' Association R.O.C

Taiwan Medical Association

Taiwan Association of Clinical Psychology

Taiwan Neurological Society

Taiwan Association of Family Medicine

Taiwan Occupational Therapy Association

Taiwan Association of Social Workers

Taiwanese Society of Geriatric Psychiatry

Taiwan College of Family Physicians

Taiwanese Society of Psychiatry

Taiwan Dementia Society

The Gerontological Society of Taiwan

Organizing Committee

Chairperson: Ming-Been Lee

Secretary General: Ching-Jui Chang

Deputy Secretary General: Li-Yu Tang

Members: Chih-Jen Chang, Chiao-Chicy Chen, Ching-Yu Chen, Sien-Tsong Chen, Mei-Hua Chou,
Jen-Ping Huang, Huei-Chen Ko, Cheng-Chieh Lin, Li-Chan Lin, Ching-Kuan Liu,
Pou-Ching Lu, Shu-Jen Shiau

Scientific Committee

Chairperson: Ping-Keung Yip

Co-chairpersons: Mau-Sun Hua, Te-Jen Lai

Members: Ching-Juei Chang, Hsiu-Mei Chuang, Wen-Chuin Hsu, Tzug-Jeng Hwang, Kai-Kuen Leung,
Li-Chan Lin, Hui-Fen Mao, Li-Yu Tang, Ying-Hui Wu, Sui-Hing Yan

International Advisory Committee

Chairperson: Rong-Chi Chen (Taiwan)

Members: Henry Brodaty (Australia) ∨ Glenn Rees (Australia) ∨ Robert Yeoh (Australia) ∨
Yin-Hua Wang (China) ∨ Claudia Lai (Hong Kong) ∨ Jacob Roy (India) ∨
Issho Matsumoto (Japan) ∨ Hussain Jafri (Pakistan) ∨ Ang Peng Chye (Singapore) ∨
Li-Ling Ng (Singapore) ∨ Sung-Hee Lee (South Korea) ∨ Tami Tamitegama (Sri Lanka) ∨
Nori Graham (UK) ∨ Orien Reid (USA)

11th Asia-Pacific Regional Conference of Alzheimer's Disease International
Dementia Care: Fight and Light

General Information

Secretariat

c/o K & A International Co., Ltd.
7F, No. 249, Fuxing S. Rd., Sec. 1, Taipei, Taiwan 10666
Tel: +886-2-2701-8768 Fax: +886-2-2702-2025
Email: alz2008@knaintl.com.tw <http://www.alz2008.org.tw>

Dates June 13 (Fri.) – 15 (Sun.), 2008

Venue Howard Plaza Hotel Taipei
No. 160, Jen Ai Rd., Sec. 3, Taipei, Taiwan
<http://taipei.howard-hotels.com>

Official Language

English is the official language for the 11th Asia-Pacific Regional Conference of Alzheimer's Disease International.

Letter of Invitation

Upon request, the Secretariat will issue a letter of invitation to facilitate a participant's travel and visa arrangements. It does not imply provision of any financial or other support.

Certificate of Attendance

A certificate of attendance will be issued to all participants.

Access

The TTY Airport and Kaohsiung Airport can be accessed via over 190 non-stop and direct flights from 56 major cities throughout the world. The carriers are Air Macau, Air New Zealand, Air Nippon, Angkor Airways, Asiana Airlines, Cathay Pacific, China Airlines, Eva Airways, Continental, Dragon Air, Japan Asia Airways, Korean Air, Far Eastern Air, Northwest, KLM, Malaysia Airlines, Mandarin Airlines, Palau Trans, Pacific Airlines, Philippine Airlines, Thai Airways, Transasia Airways, United Airlines and Vietnam Airlines.

Visa Requirements

Participants should consult the Bureau of Consular Affairs' (BOCA) website at <http://www.boca.gov.tw> for information about visa requirements for entry into Taiwan. Citizens of the following countries may enter and remain in Taiwan without a visa for a maximum of 30 days: Australia, Austria, Belgium, Canada, Costa Rica, Czech Republic, Denmark, Finland, France, Germany, Greece, Ireland, Iceland, Italy, Japan, Republic of Korea, Liechtenstein, Luxembourg, Malaysia, Malta, Monaco, Netherlands, New Zealand, Norway, Portugal, Singapore, Spain, Sweden, Switzerland, UK, and USA.

Visitor Visa Application Forms may be downloaded from <http://www.boca.gov.tw> and should be submitted directly to BOCA. For more information, please contact BOCA at +886-2-2343-2885 or e-mail: post@boca.gov.tw.

Transport between TTY International Airport and Taipei

Taxis queue outside the Arrival Halls of both terminals. Airport Taxis charge according to the meter plus a 50% surcharge (highway tolls not included). Typical fare to Taipei is around NT\$1,100. Four bus companies now provide frequent service between TTY International Airport and important destinations around Taipei everyday in every 30 to 40 minutes. Costs are approximately NT\$110~140 (US\$4~5), takes about 60 to 90 minutes. The bus station is on the southwest side of the Arrival Passenger Reception Area in Terminal I, and on the northeast side of the Arrival Passenger Reception Area on the first floor in Terminal II. For more information, please check the website: <http://www.taoyuanairport.gov.tw>





Call for Abstracts

The Scientific Committee encourages meeting participants to submit abstract of papers to be considered for presentation at the 11th Asia-Pacific Regional Conference of Alzheimer's Disease International.

Main Topics

- Care Management of Dementia Special Care Unit
- Dementia Care by Foreign Helper
- Dementia in Acute Care Setting
- Ethical & Legal Issues
- Family Support Program
- Living with Memory Loss Program
- Medical
- Non-pharmacology Treatment
- Psychological Approach
- Quality of Care
- Voice of People with Dementia

Submission of Abstract

All abstracts must be submitted online along with the registration form by Jan. 31, 2008 to be considered. For complete guidelines on the submission of abstracts, please visit our website at <http://www.alz2008.or.tw>

Presentation

Oral: Presenting author will be notified of presenting schedule by Mar. 31, 2008.

Poster: Bulletin board size is 90cm (W) x 180cm (H).

* Detailed presentation guidelines will be provided with acceptance letters.

Important Dates

Important Dates	Deadline
Abstracts Submission	January 31, 2008
Notification of Paper Acceptance	March 31, 2008
Early-Bird Registration	March 31, 2008
Regular Registration	May 31, 2008

Registration Information

Registration Form

Please complete the Registration Form and return it to the secretariat with the appropriate fees as early as possible.

You may also register online at <http://www.alz2008.org.tw>

Registration Fees (exchange rate is approximately US\$1 to NT\$32.5)

Category	Early Registration paid by March 31, 2008	Regular Registration paid from April 1, 2008 to May 31, 2008	On-Site Registration (On and after June 1)
Participant	NT\$ 6,000	NT\$ 7,000	NT\$ 8,000
Family Caregiver / Patient /	NT\$ 2,000	NT\$ 2,000	NT\$ 2,500
Accompanying Person	NT\$ 2,000	NT\$ 2,000	NT\$ 2,500

- Please be informed that lunch is not included in the registration but will provide coffee break and welcome reception.
- To submit an abstract, you are required to register first.

Method of Payment

Registration fees must be paid at the time of registration. Payment can be made by the following methods--

a. by bank transfer

Account Name: Taiwan Alzheimer's Disease Association

Account No: 1346-717-033911

Bank Name: Taiwan Cooperative Bank, Tai-Da Branch

Bank Address: No. 7, Chung San South Road, Taipei, 100, Taiwan

Swift Code: TACBTWTP

★ Please attach a copy of the bank transfer confirmation with the applicant's name to the Registration Form. Applicants must pay all charges for the transfer.

b. by credit card (VISA or Master Card only)

Confirmation of Registration

You will receive confirmation of registration via Email once receiving both the registration form and the proof of payment. If you pre-register and do not receive a confirmation, please bring a copy of your registration form and proof of payment to the registration desk on site.

Cancellation & Refund

All cancellations and refund requests must be made in writing to the secretariat. For cancellations postmarked on or before May 31, 2008, 50% of the registration fee will be refunded. For cancellations postmarked on or after June 1, 2008, no fees will be refunded. Refunds will be issued after the meeting.

On-Site Registration

On-site registration fee will be NT\$ 8,000. Payments must be made either in cash (New Taiwan Dollars only) or by credit card.





Social Programs

Welcome Reception

Time: 19:00 - 21:00, Friday, June 13, 2008

Place: Banquet Hall I & II, B2, Howard Plaza Hotel Taipei

Address: 160, Jen Ai Road, Section 3, Taipei

Free for the participant and accompanying person

Gala Dinner

Time: 19:00 - 22:00, Saturday, June 14, 2008

Place: Xinyi Public Assembly Hall

Fee: NT\$ 2,000

Complimentary Half-Day City Tour--for pre-registered Accompanying Persons only

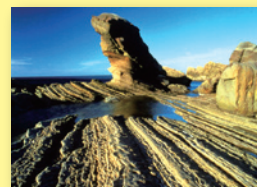
Time: 08:00 - 12:00, Saturday, June 14, 2008

Pick-up: 08:00 at Howard Plaza Hotel Taipei Lobby

Optional Tour

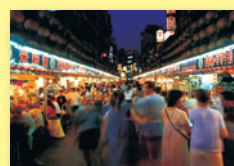
T1 Chiufen Village & Northeast Coast Tour (June 14)

Pick-up:	13:00~13:30 at Hotel Lobby
Duration:	4 hrs
Tour Stops:	Chiufen Village - Chinkuashih Village - Pitou Cape - Nanya Rock Formations - Bay of Two Colors
Fare:	NT\$ 1,000 per person
Itinerary	<ul style="list-style-type: none"> • Chiufen Village: The villages of Chiufen were once centers of gold mining in Taiwan. The gold is gone, but these quaint old villages, built of closely-packed houses clinging to steep mountainsides, continue to offer enchanting scenery and fascinating glimpses into the lifestyles of the past. • The Northeast Coast National Scenic Area: The Northeast coast National Scenic Area is located in the northeast corner of Taiwan. The scenic area is noted for its numerous capes and bays backed by green mountains.



T2 Northern Coast Tour (June 15)

Pick-up:	08:00~09:00 at Hotel Lobby
Duration:	4 hrs
Tour Stops:	Keelung City - Keelung Harbour - Buddha Statue - Yehliu Park - Queen's Head
Fare:	NT\$ 900 per person
Itinerary	<ul style="list-style-type: none"> • Keelung: Keelung, a 40-minute drive northeast of Taipei, is one of Taiwan's international seaports and transportation hubs. On the Chung Cheng Park, you can view the huge statue of the Goddess of Mercy and also a panoramic view of Keelung Harbour. • Yehliu Park: Yehliu is famous for its natural rock formations which are an amazing array of artistic shapes created by erosion and other natural forces. Among the rocks, the Queen's Head is one of the most famous one.



T3 Folk Arts Tour (June 15)

Pick-up:	13:00~14:00 at Hotel Lobby
Duration:	4 hrs
Tour Stops:	Sanhsia Tsushih Temple - Old Street in Sanhsia - Yingko's Pottery Factory & Showroom - Pottery Street in Yingko
Fare:	NT\$ 1,000 per person
Itinerary	<ul style="list-style-type: none"> • Yingko, Pottery's Heaven: A short trip to the lush countryside southwest of Taipei bring you to Yingko where hand-painted replicas of elegant Ming (1368-1644) and Ching (1644-1911) vases are produced. The small town is Taiwan's pottery center and its narrow streets are lined with shops selling everything from earthenware tea sets to delicate statues. • Sanhsia & Tsushih Temple: Sanhsia, about 22 KM southwest to Taipei, is a bustling town with narrow, winding streets and brick buildings at least a century old. The main attraction is the Tsushih(Divine Ancestor) Temple, built in honor of Sung Dynasty loyalist, Cheng Chao-ying. This temple was in ruins at the end of World War II, and a meticulous restoration project has been underway for some forty years. The temple is known for its intricately carved stone and bronze columns and statues, carved stone lions, camphor wood carvings, and exquisite bronze bas-reliefs.



Hotel Accommodations

Hotel rooms have been reserved for the Conference participants and accompanying guests at the official hotels with special rates. Please indicate your choice of room and exact dates of arrival and departure as set out on the Registration Form. Fax the Form to the secretariat office no later than May 31, 2008.

1. Howard Plaza Hotel Taipei (Venue)

160, Jen Ai Road, Section 3, Taipei

<http://taipei.howard-hotels.com>

Tel: +886-2-2700-2323

- To TTY Airport: 50 minutes
 - a. NT\$145 by airport shuttle bus (05:50 am-00:50am)
 - b. Airport transfer can be arranged by the hotel with extra charge shown as below.



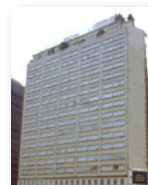
2. Caesar Park Taipei

38, Chung Hsiao W. Rd., Sec. 1, Taipei

<http://www.caesarpark.com.tw>

Tel: +886-2-2311-5151

- To TTY Airport: 50 minutes
 - a. NT\$150 by airport shuttle bus (05:50 am-00:50am)
 - b. Airport transfer can be arranged by the hotel with extra charge shown as below.
- To Venue: 10 minutes by taxi



3. Howard International House Taipei

30, Hsin Sheng South Road Sec. 3, Taipei

<http://intl-house.howard-hotels.com>

Tel: +886-2-8369-1155

- To TTY Airport: 50 minutes
 - a. Take a taxi (NT\$100) to the airport shuttle bus stop at Howard Plaza Hotel Taipei, and then transfer to airport shuttle bus (NT\$145).
 - b. Airport transfer can be arranged by the hotel with extra charge shown as below.
- To Venue: 15 minutes by taxi



	Howard Plaza Hotel Taipei	Caesar Park Taipei	Howard International House Taipei
Single Room	NT\$ 4,300	NT\$ 3,700	NT\$ 2,000
Double Room	NT\$ 4,700	NT\$ 4,000	---
Breakfast	Included	Included	Included
10% Service Charge	Not Included	Not Included	Not Included
Airport Transfer Service/ One Way	NT\$ 1,470 NT\$1,780 (23:00~07:00)	NT\$ 1,680	NT\$ 1,570 NT\$1,780 (23:00~07:00)

- Guaranteed reservation requires credit card numbers.
- **Payment for hotel accommodations must be made directly to the hotel when you check out.**
- One night room rate will be charged in the event of cancellation on or after May 31, 2008.

Registration Form

Please return Registration Form by mail or fax to :

Secretariat Office c/o K & A International Co., Ltd.

7F No. 249 Fuxing S. Rd., Sec. 1, Taipei, Taiwan 10666

Tel: +886-2-2701-8768 Fax: +886-2-2702-2025

Email: alz2008@knaintl.com.tw

You may also register online at <http://www.alzf2008.org.tw>

Please use capital letters

Participant Information

First Name _____ Last Name _____

Institution _____

Mailing Address _____

Country _____

Tel (+country code) _____ Fax _____

Mobile Phone _____ Email _____

Accompanying Person Information

Name _____ Name _____

A. Registration Fee (Please see P. 7 for details.)

Category	Registration Fee		
	Early Registration paid by March 31, 2008	Regular Registration paid from April 1, 2008 to May 31, 2008	On-Site Registration
Participant	<input type="checkbox"/> NT\$ 6,000	<input type="checkbox"/> NT\$ 7,000	<input type="checkbox"/> NT\$ 8,000
Family Caregiver/ Patient	<input type="checkbox"/> NT\$ 2,000	<input type="checkbox"/> NT\$ 2,000	<input type="checkbox"/> NT\$ 2,500
Accompanying Person	<input type="checkbox"/> NT\$ 2,000	<input type="checkbox"/> NT\$ 2,000	<input type="checkbox"/> NT\$ 2,500
(A) Subtotal NT\$			

- You will receive confirmation of registration via Email once your registration has been processed. If you pre-register and do not receive a confirmation, please bring a copy of your registration form and proof of payment to the registration desk on site.
- On-site registration fee will be NT\$8,000. Payments must be made either in cash (New Taiwan Dollars only) or by credit card.

B. Social Programs (Please see P. 8 for details.)

Activities	Rate for Per Person	Number of Attendees
Welcome Reception (2008/6/13)	Complimentary	X() person(s)
Gala Dinner (2008/6/14)	<input type="checkbox"/> NT\$2,000	X() person(s)
(B) Subtotal NT\$		



Method of Payment

- ☐ by bank transfer

Account Name: Taiwan Alzheimer's Disease Association

Account No: 1346-717-033911

Bank Name: Taiwan Cooperative Bank, Tai-Da Branch

Bank Address: No. 7, Chung San South Road, Taipei, 100, Taiwan

Swift Code: TACBTWTP

★ Please attach a copy of the bank transfer confirmation with the applicant's name to the Registration Form. Applicants should pay all bank charges for remittance.

- ☐ by credit card (VISA or Master Card only)

☐ VISA

☐ Master Card

Payment: (A) Registration Fee + (B) Social Programs = Total Payment: NT\$ _____

Card No.: _____ Transaction Date: _____

Cardholder Name: _____ Expire Date: _____ (month) / _____ (year)

Last 3 Digits of the number on the back of your card _____

ID/ Passport No.: _____ Birth Date: _____ (Y) _____ (M) _____ (D)

Cardholder Address: _____

Cardholder Signature _____ Date _____

C. Hotel Accommodation (Please see P. 10 for details.)

Hotel	Daily Rate with Breakfast		Nights	Airport Transfer Arrangement
	Single Room	Double Room		
The Howard Plaza Hotel	<input type="checkbox"/> NT\$ 4,300	<input type="checkbox"/> NT\$ 4,700	x ()	<input type="checkbox"/> Airport → Hotel <input type="checkbox"/> Hotel → Airport
Caesar Park Taipei	<input type="checkbox"/> NT\$ 3,700	<input type="checkbox"/> NT\$ 4,000	x ()	<input type="checkbox"/> Airport → Hotel <input type="checkbox"/> Hotel → Airport
Howard Int'l House Taipei	<input type="checkbox"/> NT\$ 2,000	<input type="checkbox"/> NT\$ 3,500	x ()	<input type="checkbox"/> Airport → Hotel <input type="checkbox"/> Hotel → Airport

Arrival date: _____ Flight No: _____ Departure date: _____ Flight No: _____

- The above room rates are subject to 10% service charge.
- Guaranteed reservation requires credit card numbers.
- **Payment for hotel accommodations must be made directly to the hotel when you check out.**
- One night room rate will be charged in the event of cancellation on or after May 31, 2008.

D. Optional Tours (Please see P. 8 for details.)

Tour	Fee	No. of Attendees	Date
T1 Chiufen Village & Northeast Coast Tour	<input type="checkbox"/> NT\$ 1,000	x ()	2008/06/14
T2 Northern Coast Tour	<input type="checkbox"/> NT\$ 900	x ()	2008/06/15
T3 Folk Arts Tour	<input type="checkbox"/> NT\$ 1,000	x ()	2008/06/15

- No deposit is required but reservations can be guaranteed with a credit card.
- **Please confirm your tours at the registration desk on site.**

Taipei City Map



1. 福華飯店
Howard Plaza Hotel Taipei

2. 凱撒大飯店
Caesar Park Taipei

3. 福華國際文教會館
Howard International House Taipei

4. 通化街夜市
Tunghwa Night Market

5. 京華城
Core Pacific City Living Mall

6. 國父紀念館
Dr. Sun Yat-Sen Memorial Hall

7. 誠品書店
Eslite Books (24hr open)

8. 建國假日花市
Weekend Jade Market

9. 微風廣場
Breeze Center

10. 中興百貨
Sunrise Department Store

11. 遼寧街夜市
Liaoning Street Night Market



**Alzheimer's Disease
International**

Secretariat Office

c/o K & A International Co. Ltd.

7F., No. 249, Fuxing S. Rd., Sec.1, Taipei, Taiwan 10666

Tel: +886-2-2701-8768 Fax: +886-2-2702-2025

Website: www.alz2008.org.tw

Email: alz2008@knaintl.com.tw